



Reducing GIP Timeline

Planning Advisory Committee
(PAC)

Issue ID#: IPWG003

August 11th, 2021

Overview



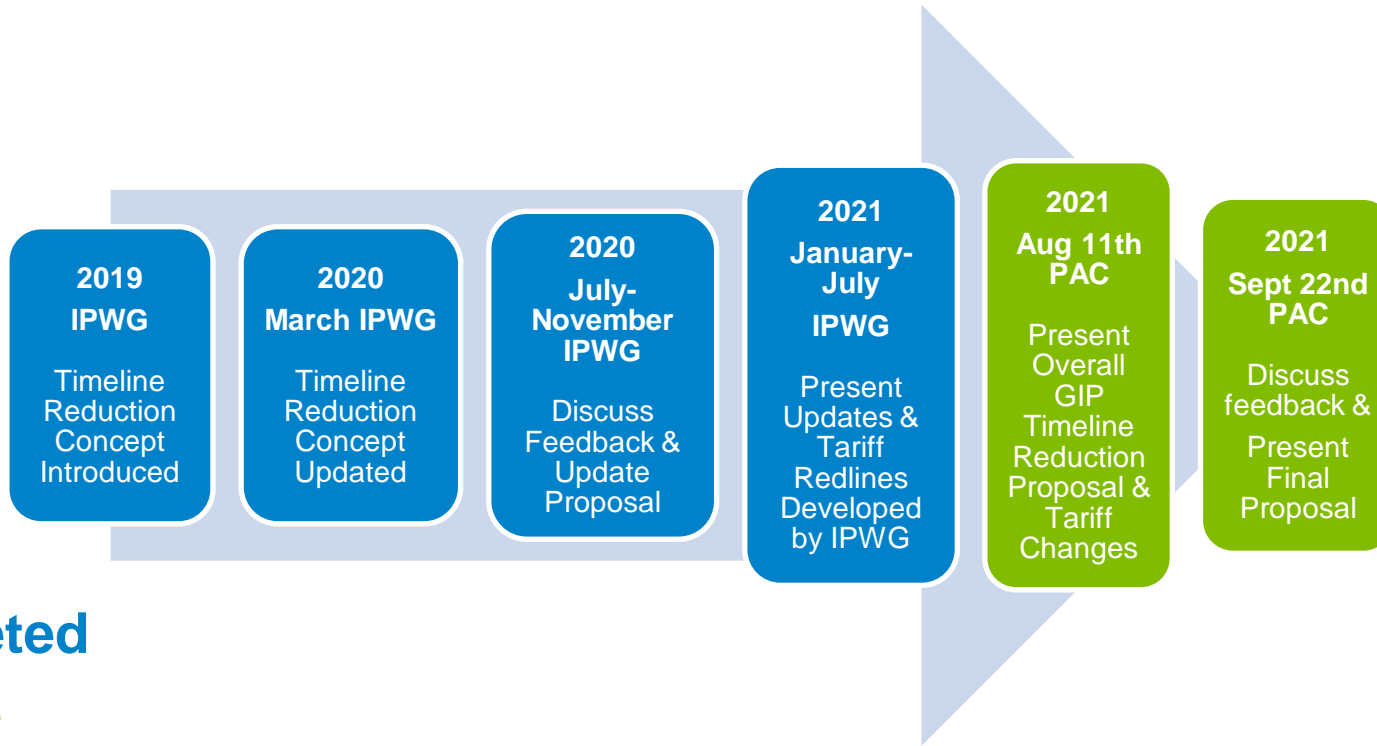
Introducing this IPWG effort to PAC for final feedback as MISO continues to strive towards establishing the most efficient interconnection process to maximize value to our MISO customers.

- **Key Takeaways:**
 - Extensive IPWG collaborative efforts have resulted in a proposal that now allows for a path towards a 1 calendar year GIP study timeline.
 - Proposal updates GI process to align with current practices, provides enhanced flexibility in the study process, and ensures a future with improved MISO MTEP alignment.
 - Future refinements to this overall effort will be assessed as the transition under this new timeline plays out.

Desired Outcomes

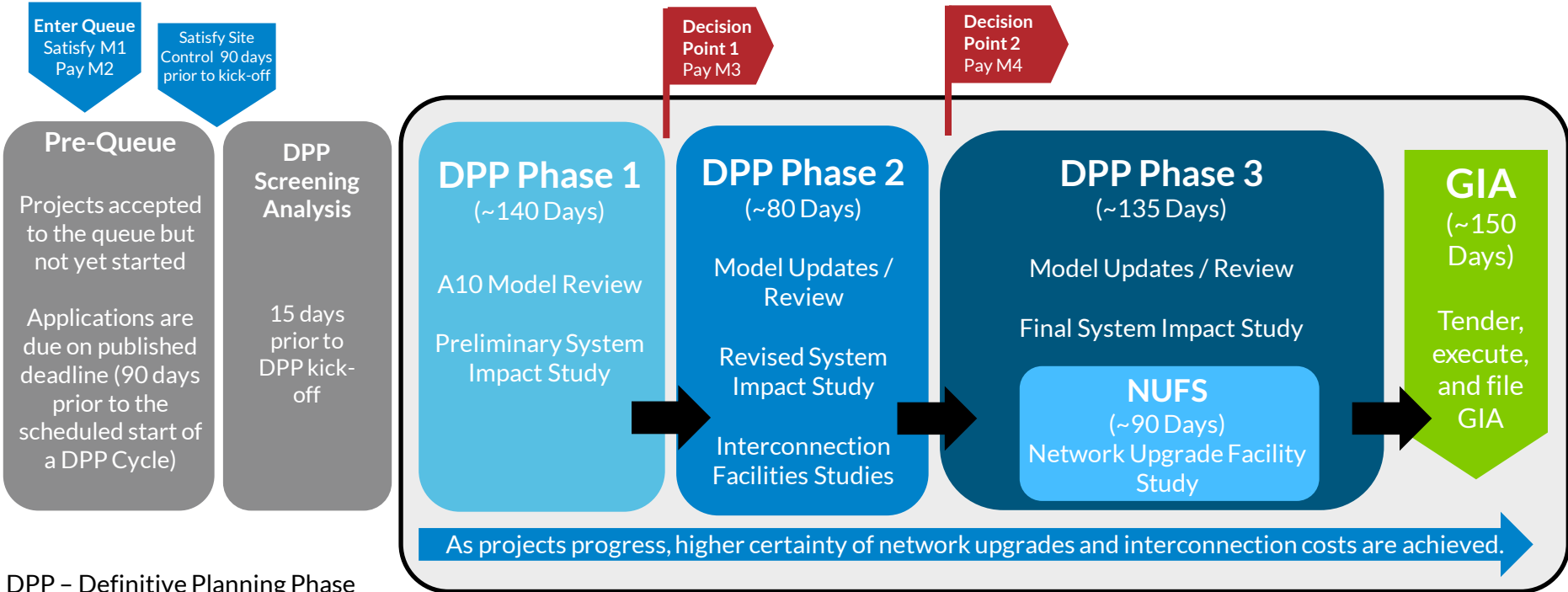
- Eliminate the GI Queue backlog through additional coordination with neighbors
- Ensure regional study efforts/models/schedules are aligned
- Get the GIP timeline to a point that better aligns with the MTEP study cycle.
- Reduce the “DPP Phase 1 → GIA Execution timeline” to take approximately 1 year.
- Provide enhanced stakeholder value by getting the majority of GIA’s executed in a timelier manner (while maintaining the accuracy of study results), reduce current duplicative study efforts, and improve team to team efficiencies.

Stakeholder Discussions



Completed
Current

Current GIP Timeline



DPP – Definitive Planning Phase
GIA – Generation Interconnection Agreement
M#- Milestones

➤ DPP Phase 1 + DPP Phase 2 + DPP Phase 3 + GIA = ~ 505 Calendar Days

Main Timeline Reduction Items

Network Upgrade Facility Study (NUFS) Process

Path #1

NUFS completion not required prior to GIA Negotiations

Path #2

NUFS completion required prior to GIA Negotiations

GIA Execution Windows

Parallel IC/TO GIA Execution Periods

Other Items

Phase I Model Build now in Pre-Queue Timeframe

Some Sequential items are now done in parallel.

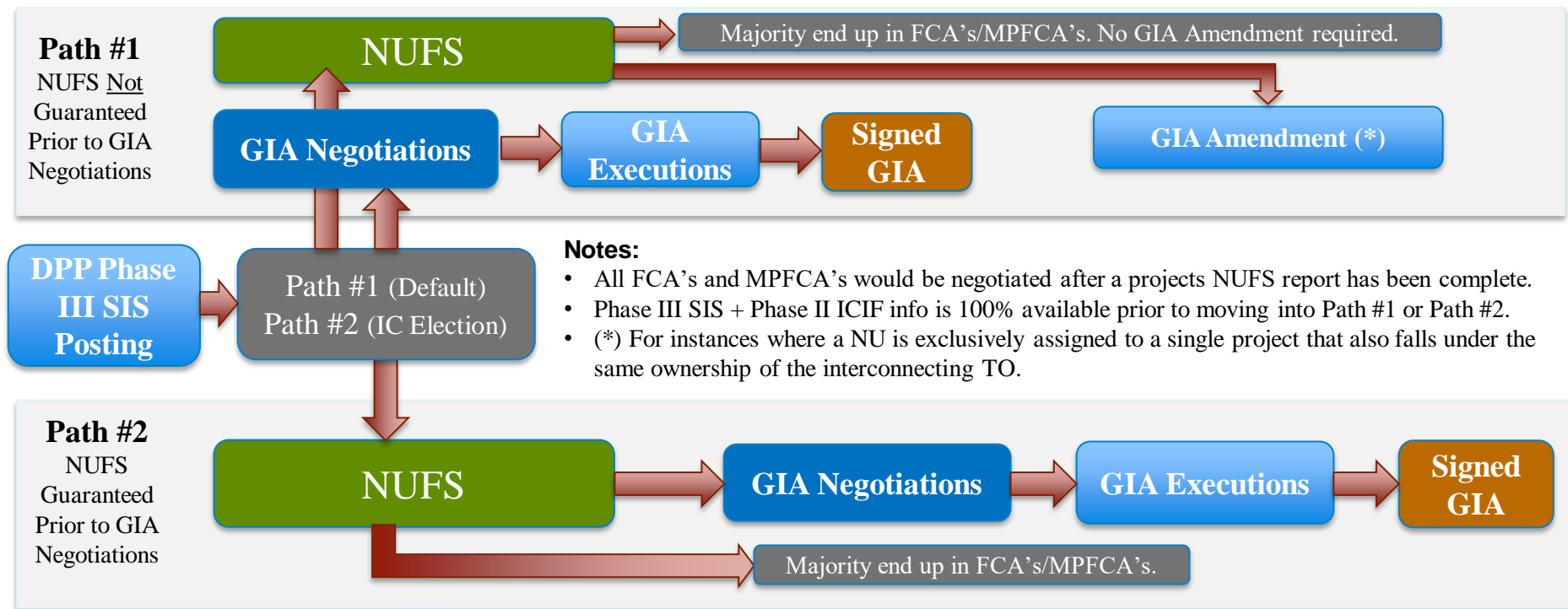
Proposed Timeline Reduction Plan (Overall)

DPP I → GIA	Current Timeline	Proposed Timeline		Timeline Duration Change	
		Path #1	Path #2	Path #1	Path #2
DPP I	~140 Calendar Days	~100 Calendar Days		↓ ~40 Calendar Days	
DPP II	~80 Calendar Days	~105 Calendar Days		↑ ~25 Calendar Days	
DPP III	~135 Calendar Days (90 Day NUFS Included)	~60 Calendar Days (NUFS <u>Not</u> Required)	~150 Calendar Days (NUFS Required)	↓ ~75 Calendar Days	↑ ~15 Calendar Days
GIA	~150 Calendar Days	~108 Calendar Days	~108 Calendar Days	↓ ~42 Calendar Days	
Totals	~505 Calendar Days	~373 Calendar Days	~463 Calendar Days	↓ ~132 Calendar Days	↓ ~42 Calendar Days

GIP Timeline Process Improvements

Improvements	Description
Affected Systems	<ul style="list-style-type: none">➤ Increased AFS collaboration & created checklist for better information exchange.➤ Enforce the 30 day provision that was added to the MISO/SPP JOA.➤ Continue our coordination efforts with SPP/MISO on queue priority.➤ Continue discussions with all AFS partners on MISO's expectations and potential process improvements / alignments efforts (i.e. AFS joint study work & SPP external consultants).
Provide Earlier Transparency	Provide more information to stakeholders earlier in the process to give everyone more time to review models, plan for mitigations, and review results. (i.e. Pre-Queue Model Postings, DPP Screening Analysis, POI Self-Check Tool)
Automated Scripts	Better automate many of the manual processes currently in place during the DPP study process. Leverage GI Online Application / database benefits. (i.e. GI Online Application)
Allow for more concurrent tasks	Where it makes sense, allow many GIP/DPP tasks to occur concurrently instead of sequentially.
Bench Strength	Additional experience, potential resourcing improvements, and team trainings will be utilized.
Entertain Larger Process Changes	Re-work current LPC study practices, utilize consultants where and when needed, and entertain larger process changes (i.e. Phase I Mitigation Work & Phase II AFS Requirements)

High Level Overview – Path #1 & Path #2



Path #1 vs. Path #2 Comparison

Path #1 (Default Path)	Path #2 (IC Elected Path)
<ul style="list-style-type: none">➤ All projects will automatically move to GIA Negotiations after Phase III SIS report is posted, unless Path #2 is elected.	<ul style="list-style-type: none">➤ Projects that elect Path #2 will wait for the NUFS process to complete prior to the GIA Negotiation window beginning.
<ul style="list-style-type: none">➤ Attractive option for projects that have no NU's OR for projects that don't want to wait for the final NUFS report to be issued prior to GIA Negotiations kicking off (In most instances the NUFS results end up in FCA/MPFCA's and are not memorialized within the GIA).	<ul style="list-style-type: none">➤ This path is for projects that need to know the details within the NUFS prior to moving into the GIA Negotiation window.
<ul style="list-style-type: none">➤ Projects are not guaranteed a NUFS report prior to Executing a GIA.	<ul style="list-style-type: none">➤ Projects are guaranteed a NUFS report prior to kicking off the GIA Negotiation window.
<ul style="list-style-type: none">➤ This path will allow a project to reach GIA Executions faster.	<ul style="list-style-type: none">➤ This path may take a project significantly longer to reach GIA Execution.
<p>Both paths will now allow for early tendering of the draft GIA (upon IC request). The earlier some content is worked on / reviewed, the less time that may be needed during the 40BD GIA Negotiation window.</p>	
<p>Both paths will allow for NUFS's to begin earlier on in the process (During Phase III), assuming both the TO and TP agree.</p>	

Appendix: A more visual breakdown of Path #1 vs. Path #2 is included within the Appendix of this presentation.

Continued discussion/feedback with IPWG members lead to several clarifications and education on the process to help gain additional comfort for the proposal.

- The DPP Phase II ICIF report will be available to all customers at the beginning of DPP Phase III.
- ICIF + Phase III SIS Reports, in most instances, make up everything that ends up being memorialized within the GIA.
- In cases where the Network Upgrades are exclusively assigned to a single project that falls under the same TO ownership as the projects interconnecting TO, the NUFS report will end up being included in the GIA (MISO estimates this to be less than 5% of cases).
 - Only if a customer chooses path #1 would this situation require an amendment to the GIA.
- For all other cases, GIA's do not include NUFS information (As it ends up in FCA's and/or MPFCA's).
- In cases where the NUFS report ends up in an FCA or MPFCA, the GIA will not be amended (As the GIA will already contain all necessary details).
- All FCA's and MPFCA's would be negotiated after a projects NUFS report has been complete.
- Any NUFS report that results in a feasibility concern (Where the NU solution is no longer viable) would require a MISO review and potential restudy situation.
 - SIS report would re-open and GIA amendments may occur.
 - This would be a very rare occurrence and could still occur in today's practice.

Appendix 6 of Attachment X (Additional Updates)

- Section 11.3.1 of Attachment X Appendix 6 (Change from last IPWG)

Contingencies Affecting Network Upgrades, System Protection Facilities and Distribution Upgrades. Network Upgrades, System Protection Facilities and Distribution Upgrades that are required to accommodate the Generating Facility may be modified because.....

(9) the Network Upgrade Facilities Study for a Network Upgrade, which is to be included in this GIA, is completed after execution of this GIA.

Phased Approach – Next Steps

Phase A (This Proposal)	Description
August 11 th (PAC)	Final proposal at PAC
Q4 2021	File tariff revisions to FERC that reflect the changes needed that align with this proposal.
Transition Plan	<p><u>Section 5.8 Transition to revised DPP schedule in Docket No. ER21</u></p> <p>Interconnection Requests for which Transmission Provider started the DPP Phase III Final System Impact Study before [effective date] will be subject to the Tariff requirements in effect prior to [effective date]. Interconnection Requests for which the DPP Phase III Final System Impact Study has not started as of [effective date] will be subject to the revised Tariff requirements accepted in Docket No. ER21-_____.</p>

Phased Approach – Next Steps

Phase B (Updates)	Description
Track/Report Phase A Progress	Analyze the success/challenges of Phase A & report back to IPWG.
End Goal	MISO will continue to strive towards having most (if not all) GI projects studied and through the process (with approved GIA's) in as close to a 1 year timeline as is possible. We will challenge the stakeholder group to refine internal processes to align with the goal of this project.

Next Steps

Feedback Requested by
September 1



Discuss Feedback, and finalize
proposal



File proposal with FERC (Q4)

Stakeholder Feedback Request

- MISO is requesting feedback on the following:
 - The overall GIP Timeline Reduction proposal, which aligns with the following posted Tariff redline documents:
 - 20210811_PAC_GIP_Reduction_Attachment X_ Appendix 6_Generator Interconnection Agreement (GIA).docx
 - 20210811_PAC_GIP_Reduction_GIP Timeline Reductions_Attachment X.docx
- Feedback requests and responses are managed through the Feedback Tool on the MISO website:
<https://www.misoenergy.org/stakeholder-engagement/stakeholder-feedback/>



Questions?

Contacts:

Miles Larson – mlarson@misoenergy.org

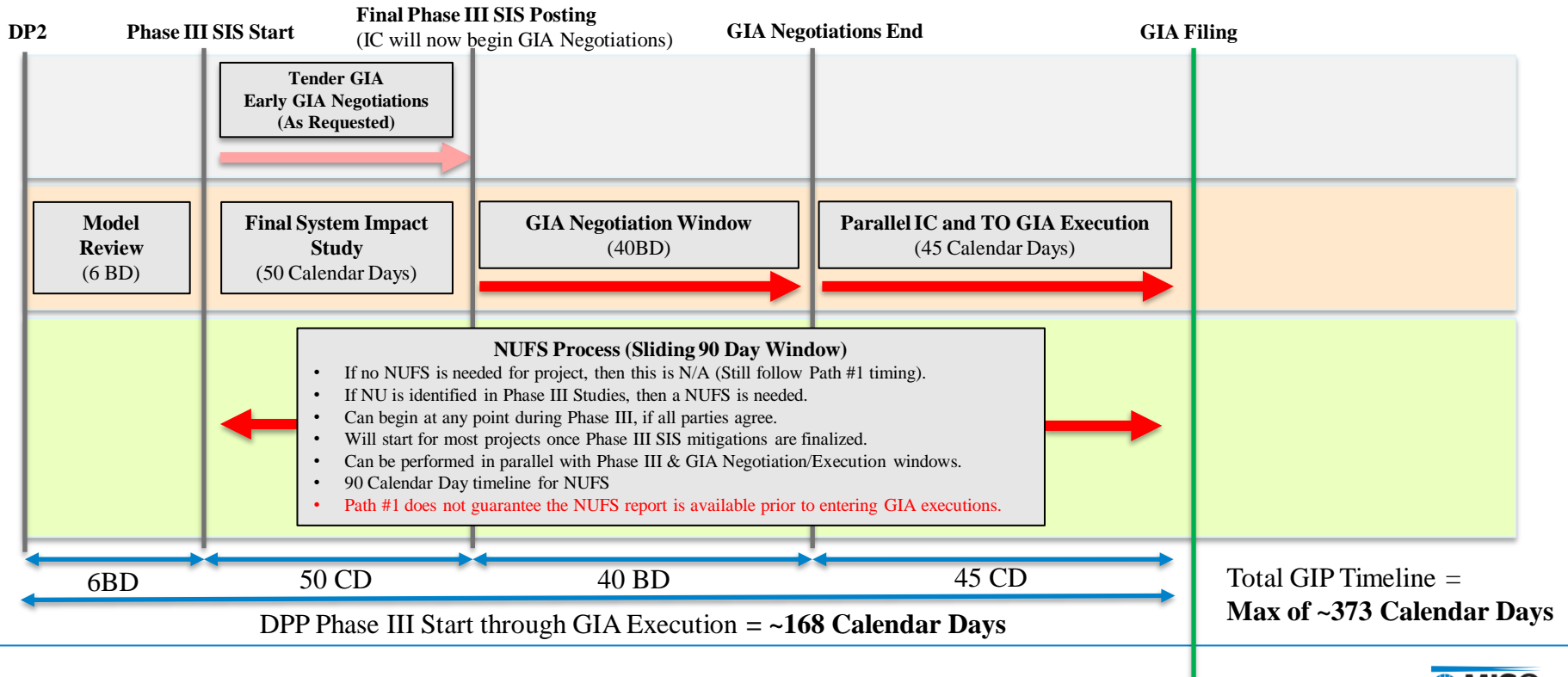
Mike Blackwell – mblackwell@misoenergy.org



Appendix

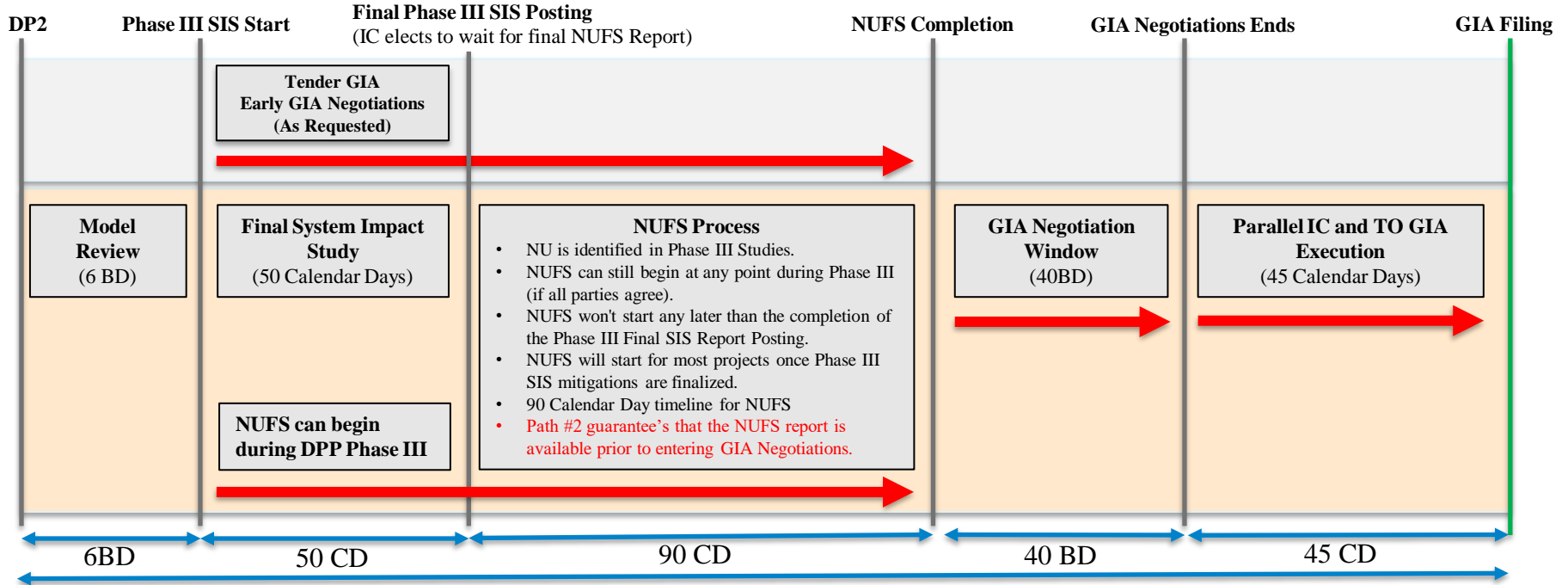
GIP DPP: GIA Path #1 (NUFS Not Required prior to GIA Negotiations)

- IC will automatically begin GIA Negotiations the day after the final Phase III System Impact Study report is posted (Unless they elect to go down path #2). If a NUFS is needed, it may or may not be entirely complete before the conclusion of GIA Negotiations.



GIP DPP: GIA Path #2 (NUFS Report Required prior to GIA Negotiations)

- IC elects to wait for the final NUFS report (After DPP Phase III final SIS report posting), prior to beginning the GIA Negotiation window.



- DPP Phase III Start through GIA Execution = ~253 Calendar Days
- Total GIP Timeline = Max of ~463 Calendar Days