



Expedited Project Review Results and Recommendation

Expedited Project Review Technical Study Task Force (EPR-TSTF)

February 3rd, 2026

Updated Slide 9 - 3/13/2026

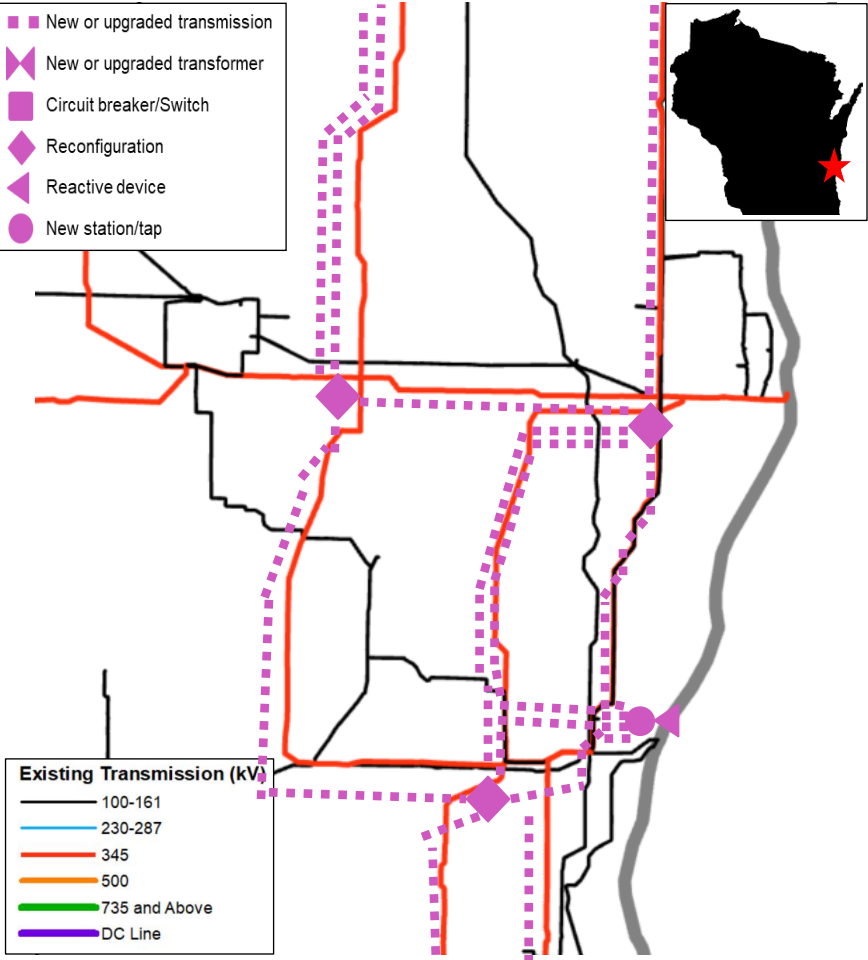
Purpose

Review results and provide MISO's recommendation for EPRs which have completed mitigation discussions

Key Takeaways

- Six (6) EPRs have completed analysis and mitigation representing 3.2 GW of new spot load and other reliability concerns
 - Central region representing 1 project for review
 - South region representing 5 projects for review
- MISO recommends the projects move to MTEP26 Appendix A after the PAC comment period.

ATC: Ozaukee County, DIC, New Substations



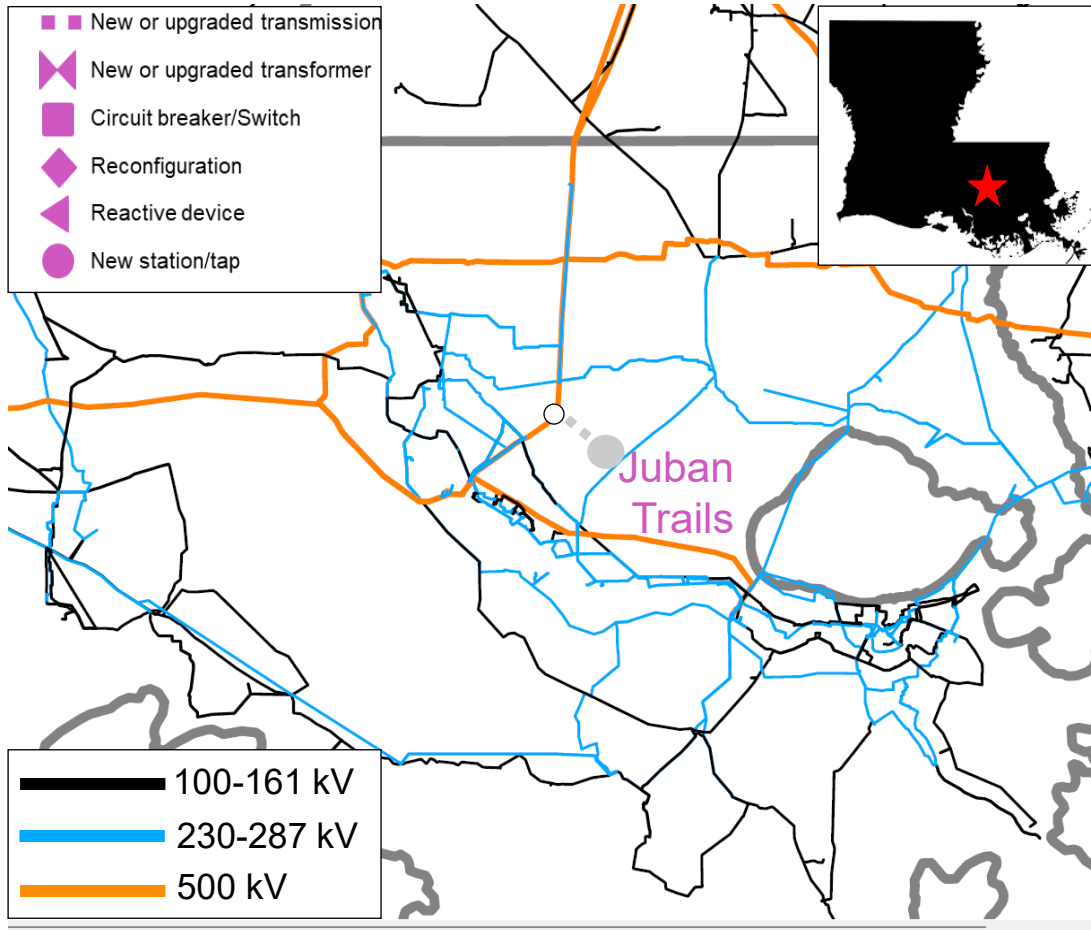
Project #	51057
Project Name	Ozaukee County, DIC, New Substations
Project Type	Other, Load Growth
Project Description	New large load addition. Install four new 345 kV substations ¹ , three new double-circuit 345 kV lines by rebuilding existing single-circuit 345 kV lines, networking adjacent 345 kV lines into the new 345 kV subs, and upgrading eight existing 345 kV lines. The new Decker 345 kV interconnection substation will include ten 345/34.5 kV customer distribution transformers, 4 x 75 Mvar cap banks, and a ±350 Mvar STATCOM.
System Need	Load Interconnection
Current Cost	\$1,300 M
Expected ISD	12/1/2027
Target Appendix	A in MTEP26

1. Three of the substations approved in LRTP 2.1 Project 28, MTEP ID 50561. The facility ID for these 3 substations are · Sheboygan River: 50987 · Mullet River Junction: 50990 · Cedar Creek Junction: 50993

Models, Reliability Analysis, and Neighbor Coordination

- The EPR was applied to all applicable MTEP models based on the In-Service Date. Models were posted for submitting TO review prior to analysis.
- MISO performed TPL-001-5.1 no-harm analysis utilizing n-1 and n-1-1 contingencies centered around the point of interconnection of the EPR
 - Results were posted for impacted entity feedback
 - All observed TPL violations or worsened reliability issues from both n-1 and n-1-1 analysis had valid CAPs that did not require any new MTEP projects
- No neighboring entities were impacted based on the analysis results.

ELL: Juban Trails 230 kV Station

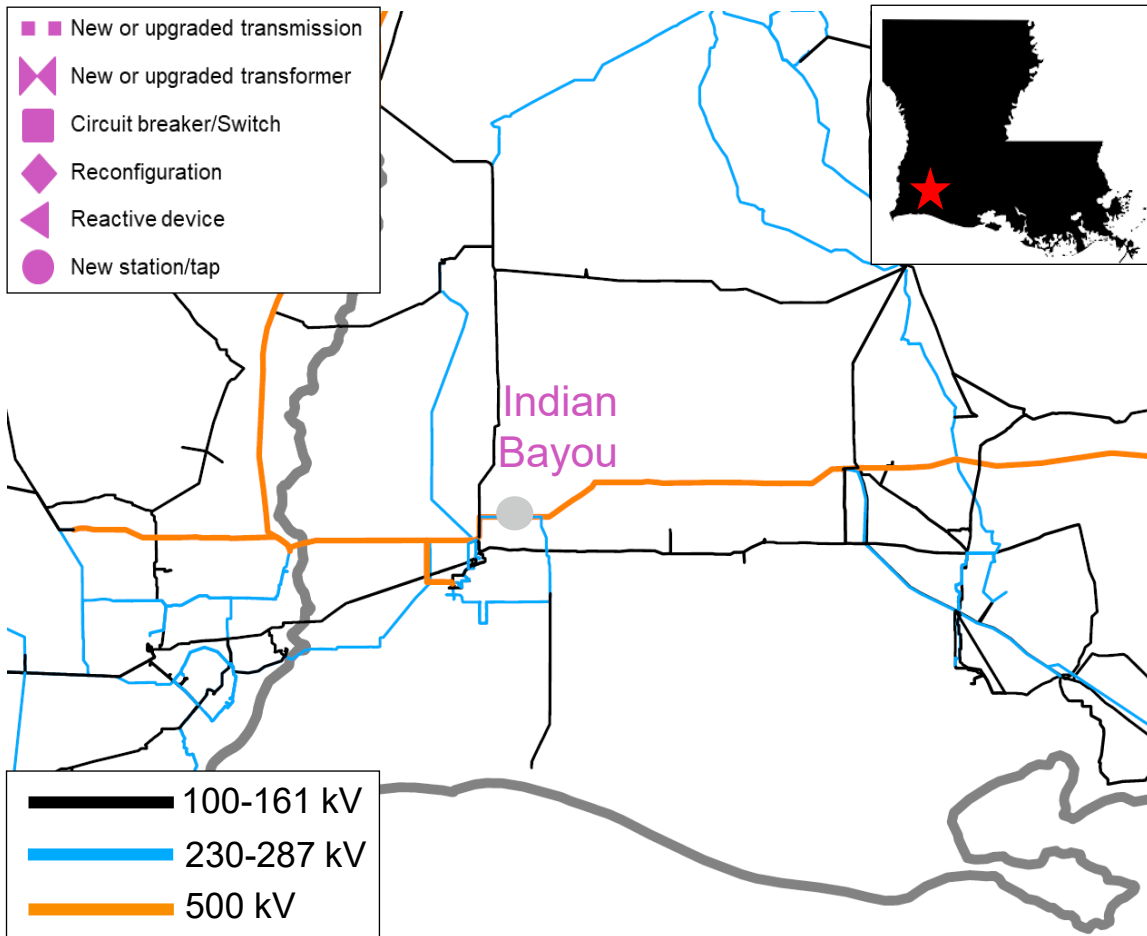


Project #	50744
Project Name	Juban Trails 230 kV Station
Project Type	Other, Load Growth
Project Description	Entergy wholesale customer DEMCO is proposing to construct a new 230 kV station named Juban Trails to serve a new customer cut into the existing Coly to Vignes 230 kV line in Livingston Parish LA.
System Need	Load Interconnection
Current Cost	\$1
Expected ISD	9/1/2027
Target Appendix	A in MTEP26

Models, Reliability Analysis, and Neighbor Coordination

- The EPR was applied to all applicable MTEP models based on the In-Service Date. Models were posted for submitting TO review prior to analysis.
- MISO performed TPL-001-5.1 no-harm analysis utilizing n-1 and n-1-1 contingencies centered around the point of interconnection of the EPR
 - Results were posted for impacted entity feedback
 - All observed TPL violations or worsened reliability issues from both n-1 and n-1-1 analysis had valid CAPs that did not require any new MTEP projects
- No neighboring entities were impacted based on the analysis results.

ELL: Indian Bayou 230 kV Station



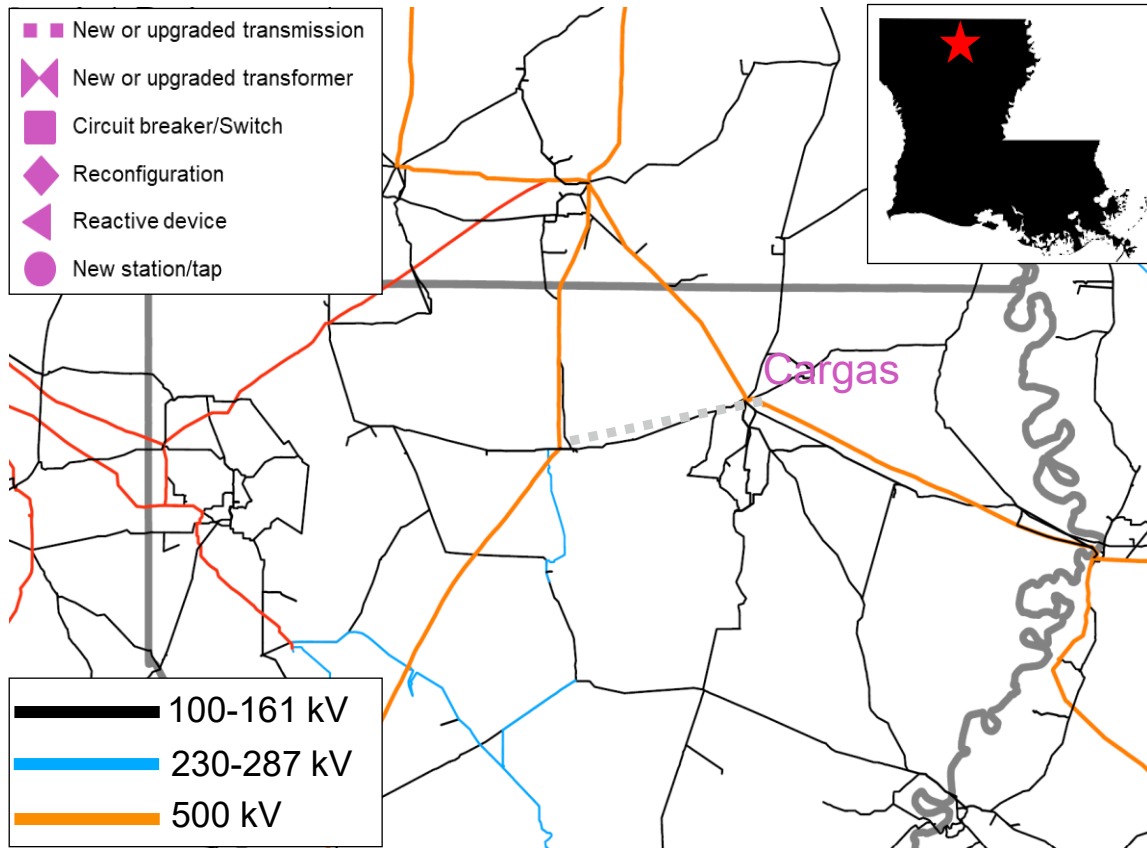
MISO, using Ventyx Velocity Suite © 2014

Project #	50740
Project Name	Indian Bayou 230 kV Station
Project Type	Other, Load Growth
Project Description	<p>Entergy is proposing to construct a new 230 kV station named Indian Bayou to serve a new customer cut into the existing Gillis to Goos Ferry 230 kV line in Ragley, LA.</p> <p>The Indian Bayou 230 kV station will be a breaker and a half substation.</p>
System Need	Load Interconnection
Current Cost	\$68.1M
Expected ISD	9/1/2027
Target Appendix	A in MTEP26

Models, Reliability Analysis, and Neighbor Coordination

- The EPR was applied to all applicable MTEP models based on the In-Service Date. Models were posted for submitting TO review prior to analysis.
- MISO performed TPL-001-5.1 no-harm analysis utilizing n-1 and n-1-1 contingencies centered around the point of interconnection of the EPR
 - Results were posted for impacted entity feedback
 - All observed TPL violations or worsened reliability issues from both n-1 and n-1-1 analysis had valid CAPs that did not require any new MTEP projects
- No neighboring entities were impacted based on the analysis results.

ELL: Mount Olive to Cargas 500kV Project



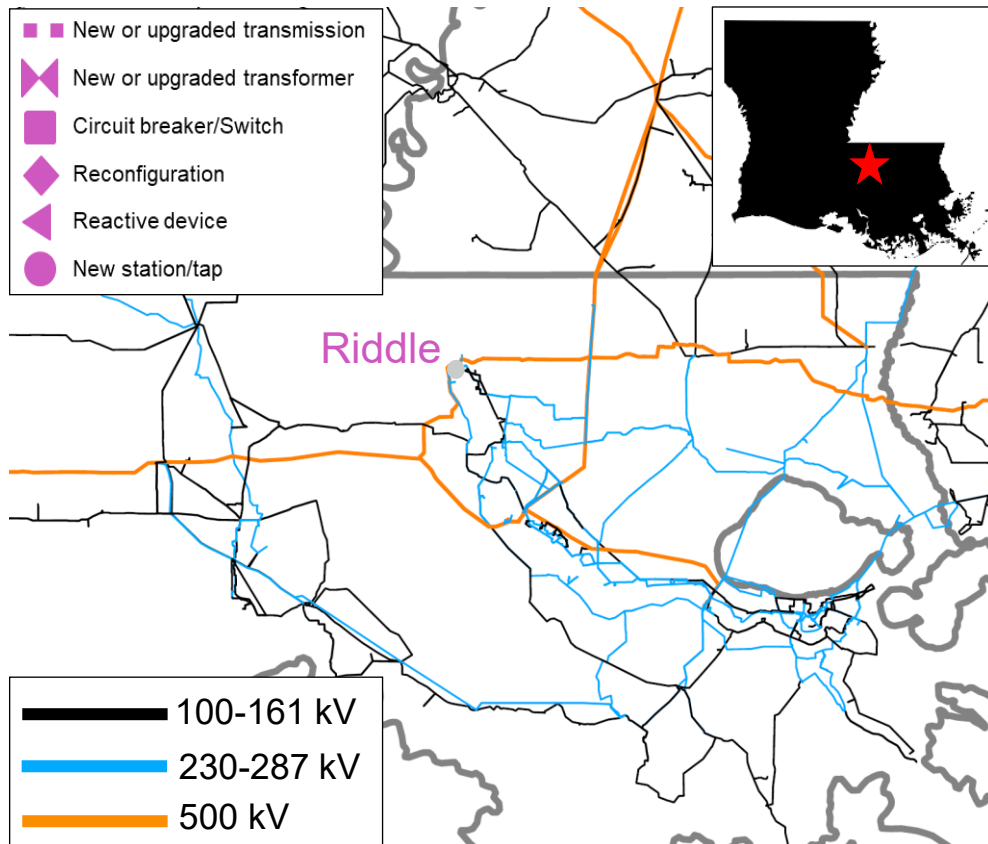
MISO, using Ventyx Velocity Suite © 2014

Project #	50713
Project Name	Mount Olive to Cargas 500 kV Project and Load Addition
Project Type	Other —Load Growth BRP
Project Description	Construct a new ~47 mile Mt Olive to Cargas 500 kV line, including all required station equipment at remote ends.
System Need	Load Interconnection
Current Cost	\$270.5M
Expected ISD	12/31/2028
Target Appendix	A in MTEP26

Models, Reliability Analysis, and Neighbor Coordination

- The EPR was applied to all applicable MTEP models based on the In-Service Date. Models were posted for submitting TO review prior to analysis.
- MISO performed TPL-001-5.1 no-harm analysis utilizing n-1 and n-1-1 contingencies centered around the point of interconnection of the EPR
 - Results were posted for impacted entity feedback
 - All observed TPL violations or worsened reliability issues from both n-1 and n-1-1 analysis had valid CAPs that did not require any new MTEP projects
- No neighboring entities were impacted based on the analysis results.

ELL: Riddle 230kV Station



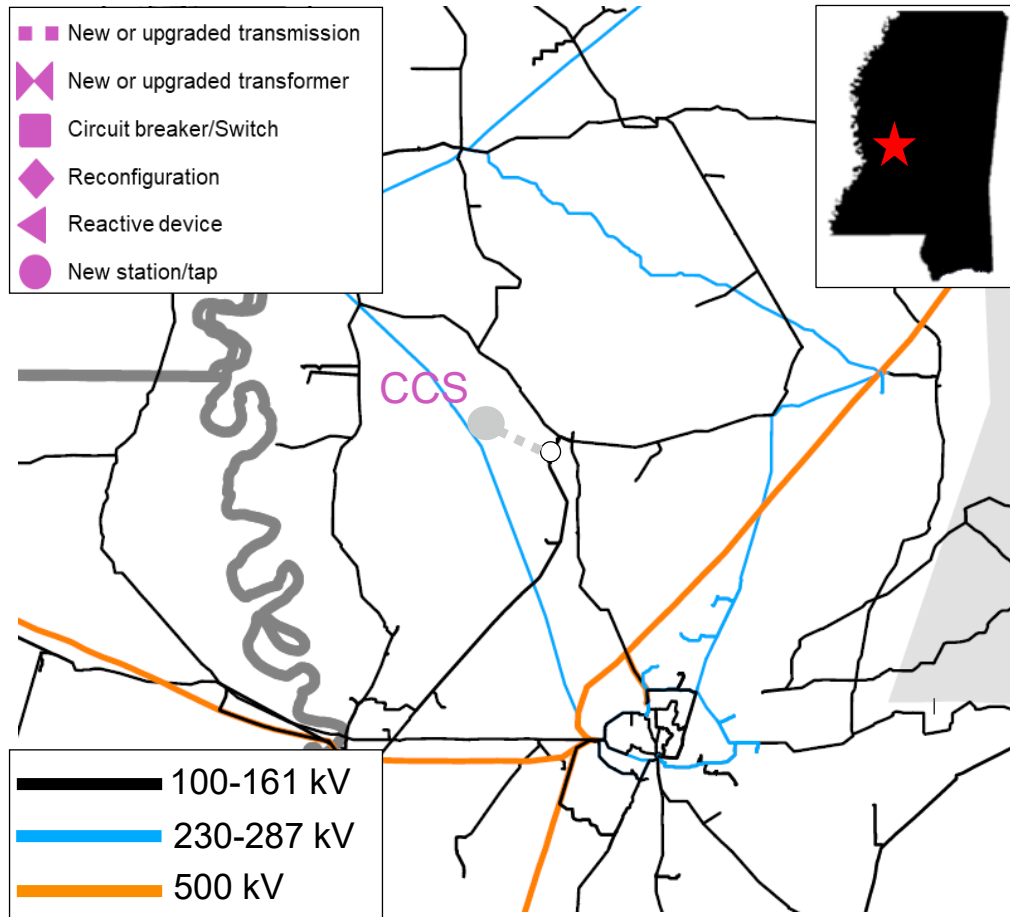
MISO, using Ventyx Velocity Suite © 2014

Project #	50779
Project Name	Riddle 230 kV Station and Line Upgrade
Project Type	Other, Load Growth
Project Description	<p>Entergy is proposing to construct a new 230 kV station named Riddle to serve a new customer cut into the existing Fancy Point to Ventress 230 kV line near Saint Francisville, LA.</p> <p>The Riddle 230 kV station will be a breaker and a half substation. The new station has a target ISD in June 2026.</p> <p>The need to reconductor the Fancy Point to Riddle 230 kV line was also identified to serve this load.</p>
System Need	Load Interconnection
Current Cost	\$27.7M
Expected ISD	6/1/2026
Target Appendix	A in MTEP26

Models, Reliability Analysis, and Neighbor Coordination

- The EPR was applied to all applicable MTEP models based on the In-Service Date. Models were posted for submitting TO review prior to analysis.
- MISO performed TPL-001-5.1 no-harm analysis utilizing n-1 and n-1-1 contingencies centered around the point of interconnection of the EPR
 - Results were posted for impacted entity feedback
 - All observed TPL violations or worsened reliability issues from both n-1 and n-1-1 analysis had valid CAPs that did not require any new MTEP projects
- No neighboring entities were impacted based on the analysis results.

EML: CCS 115kV Station



MISO, using Ventyx Velocity Suite © 2014

Project #	51146
Project Name	CCS 115 kV Station
Project Type	Other, Load Growth
Project Description	Entergy is proposing to construct a new radial 115 kV station named CCS to serve an existing customer expansion in Yazoo City, MS
System Need	Load Interconnection
Current Cost	\$8.2M
Expected ISD	7/1/2026
Target Appendix	A in MTEP26

Models, Reliability Analysis, and Neighbor Coordination

- The EPR was applied to all applicable MTEP models based on the In-Service Date. Models were posted for submitting TO review prior to analysis.
- MISO performed TPL-001-5.1 no-harm analysis utilizing n-1 and n-1-1 contingencies centered around the point of interconnection of the EPR
 - Results were posted for impacted entity feedback
 - All observed TPL violations or worsened reliability issues from both n-1 and n-1-1 analysis had valid CAPs that did not require any new MTEP projects
- No neighboring entities were impacted based on the analysis results.

Questions?

